

Presidential Suite

Cost per night: \$1,700

Downtown Skyline & River View

Conference/Dining Table for 6
Adjacent service pantry

Living area with two conversation groupings

Baby Grand Piano

Wet Bar with Service Area
And Small Refrigerator

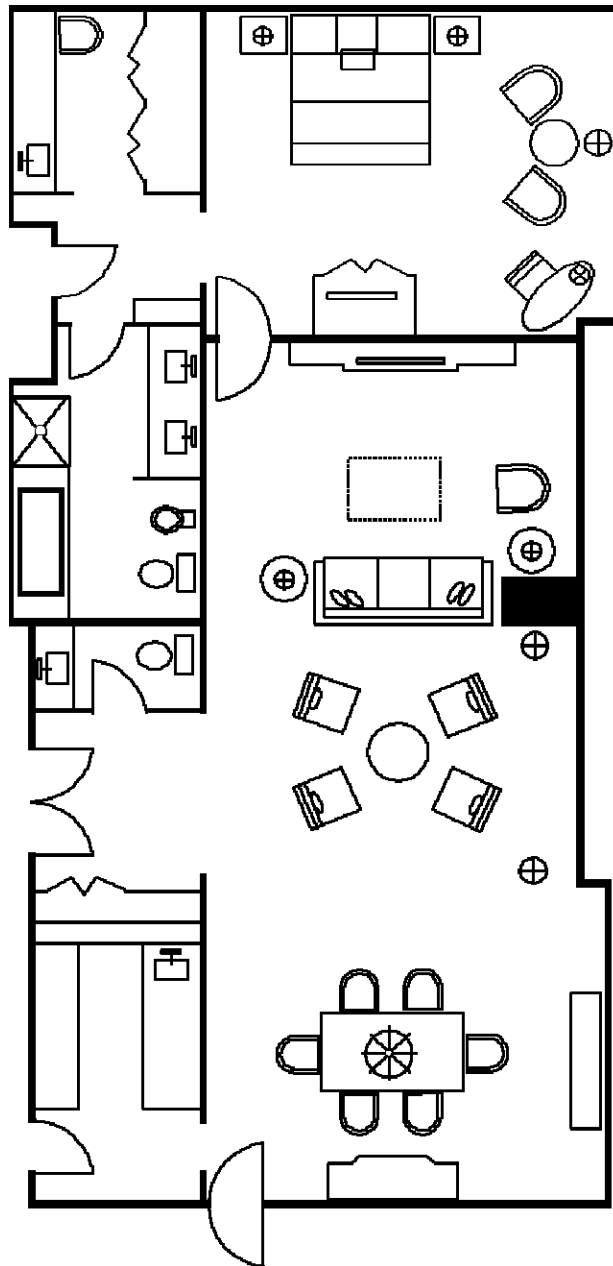
Powder Room

Master bedroom with King bed
Dressing area with large closet
Full bath with shower/tub combination
Separate shower stall
Dual sink vanity and bidet

Reception capacity of 70 (flow)
Approximate 1,000 square foot living area

(Second king bedroom available
at additional charge)

Marriott
SAN ANTONIO
RIVERCENTER



Vice Presidential Suite

Cost per night: \$1,550

Downtown Skyline & River View

Conference/Dining Table for 6

Living area with two conversation groupings

Wet Bar with Service Area
And Small Refrigerator

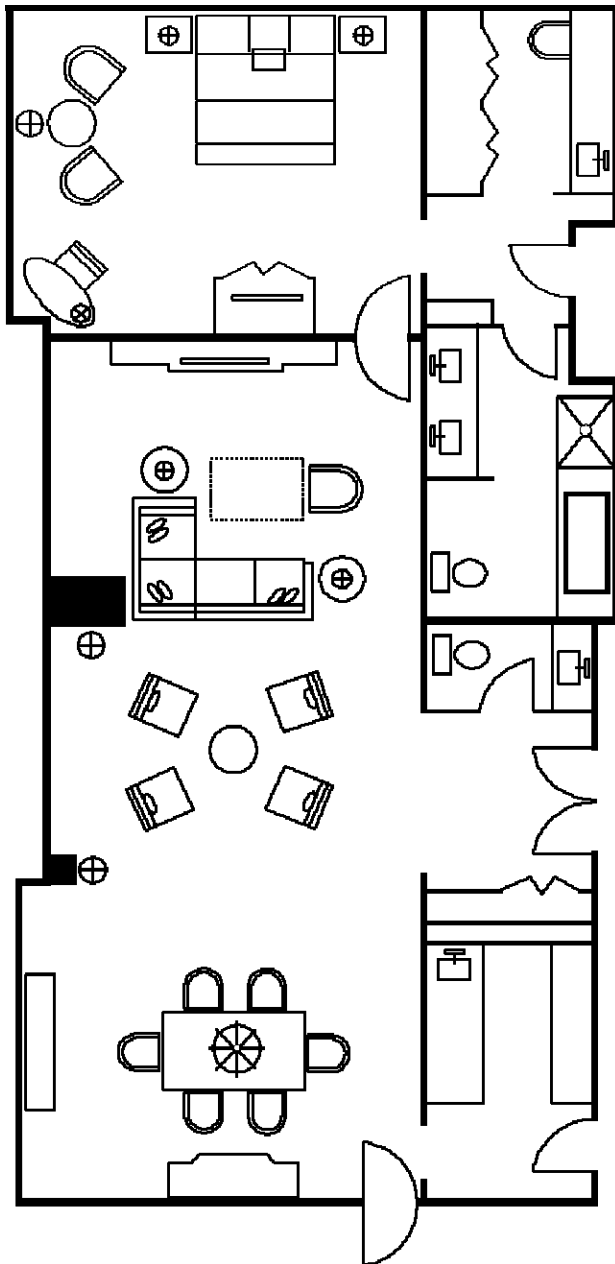
Powder Room

Master bedroom with King bed
Dressing area with large closet
Full bath with shower/tub combination
Separate shower stall
Dual sink vanity and bidet

Reception capacity of 60 (flow)
Approximate 765 square foot living area

(Second king bedroom available
at additional charge)

Marriott
SAN ANTONIO
RIVERCENTER



Luxury Suite

Cost per night: \$1,350

View of Alamodome/St. Paul's Square

Conference/Dining Table for 6

Living area with two conversation groupings

Wet Bar with Service Area
And Small Refrigerator

Powder Room

Master bedroom with King bed
Dressing area with large closet
Full bath with shower/tub combination
Separate shower stall
Dual sink vanity and bidet

Reception capacity of 60 (flow)
Approximate 765 square foot living area

(Second king bedroom available
at additional charge)



Hospitality Room

Cost per night: \$775

Living area with conversation groupings

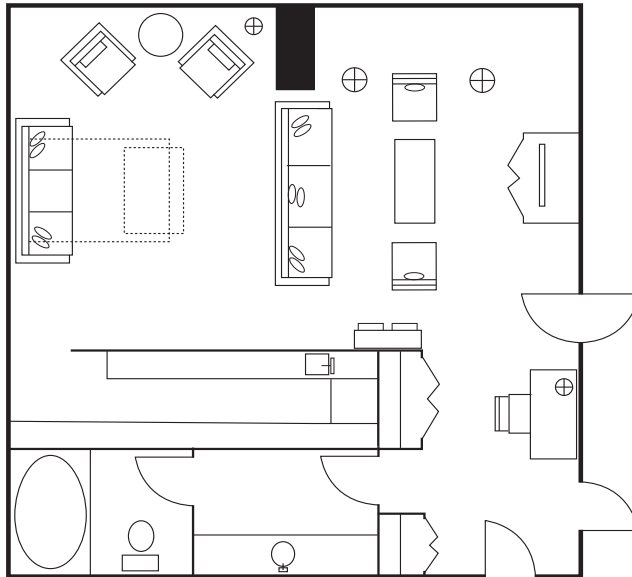
Murphy bed wall unit

Full bath

Wet Bar with small Refrigerator

Reception capacity of 30 (flow)
Approximate 535 square foot living area

(One or two connecting bedrooms
available at additional charge)



Executive Suite

Cost per night: \$875

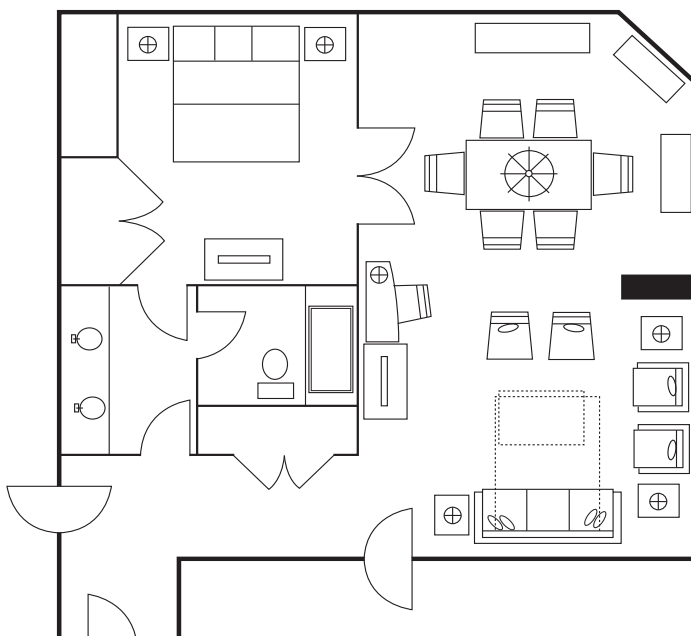
Living area contains conversation
grouping and conference/dining table for 6

Includes one King bedroom separated from
The living/dining area by French doors

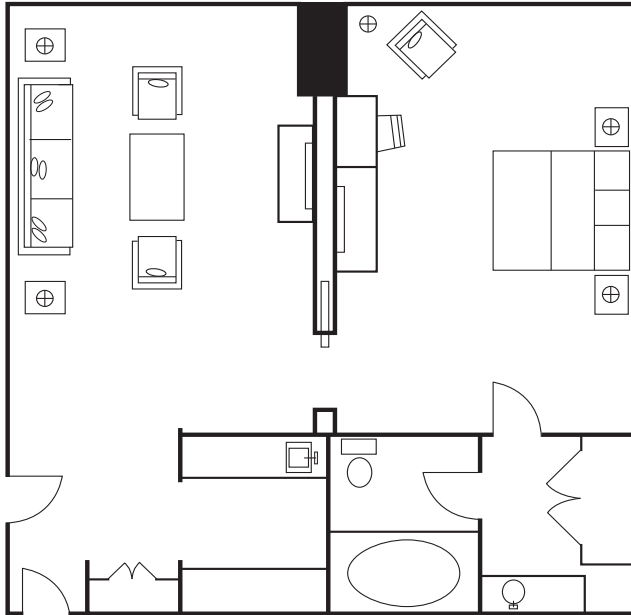
Full bath

Reception capacity of 20 (flow)
Approximate 500 square foot living area

(One or two connecting bedrooms
available at additional charge)



Marriott
SAN ANTONIO
RIVERCENTER



King Suite

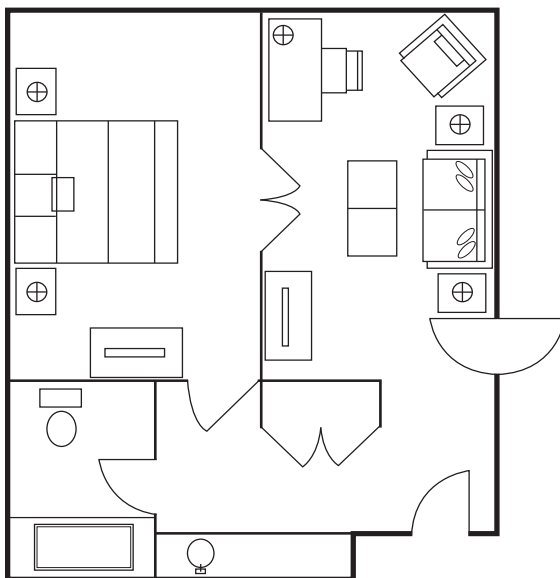
Cost per night: \$550

King bedroom separated
by pocket door from parlor/living area

Wet Bar with small Refrigerator

Full bath

(One or two connecting bedrooms
available at additional charge)



Junior Executive Suite

Cost per night: \$550

King bedroom separated by French Doors
From small living area

Full bath

(One connecting bedroom
available at additional charge)